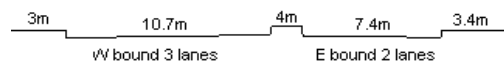


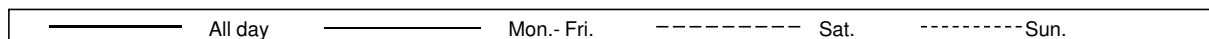
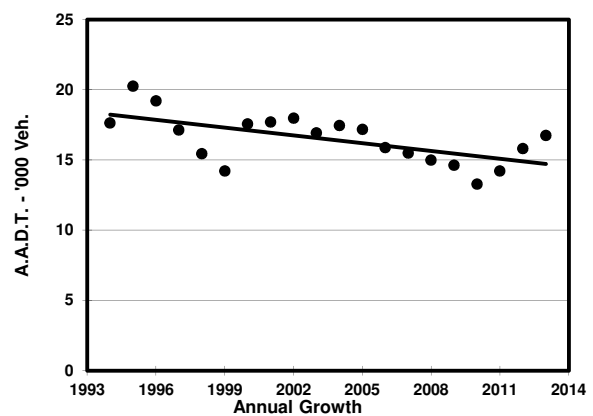
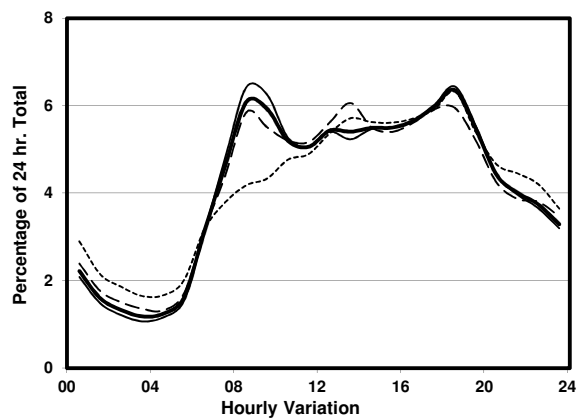
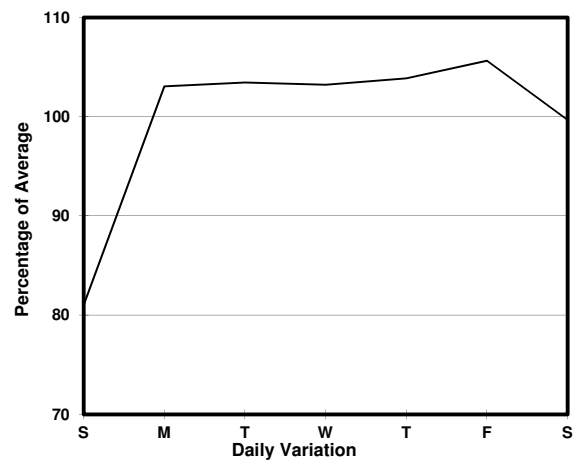
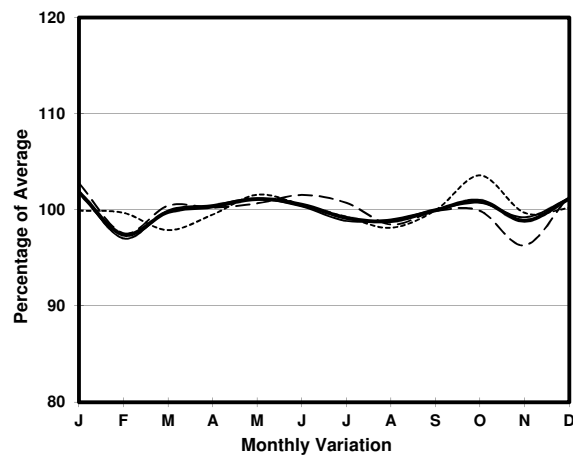
YEAR

2013

LINK KWAI FOO RD (from KWAI CHUNG RD to HING FONG RD)

CORE STATION
ROAD NETWORK
ROAD TYPE5007
MAJOR
DISTRICT DISTRIBUTOR

1. TRAFFIC FLOW VARIATION AND GROWTH



2. TRAFFIC CHARACTERISTICS (BY DIRECTION)

| Parameter | All - Day | Mon. - Fri. | Sat. | Sun. |
|--------------------------------------|-----------|-------------|-----------|-----------|
| EAST BOUND | | | | |
| A.A.D.T. | 4170 | 4410 | 4100 | 3340 |
| R 12 / 24 - % | 69.4 | 70.1 | 68.8 | 65.1 |
| R 16 / 24 - % | 88 | 88.4 | 87 | 85.8 |
| AM Peak Hour | 0800-0900 | 0800-0900 | 0900-1000 | 0900-1000 |
| One-way flow at AM peak hour | 260 | 290 | 240 | 180 |
| T - % (AM) | - | - | - | - |
| PM Peak Hour | 1800-1900 | 1800-1900 | 1700-1800 | 1800-1900 |
| One-way flow at PM peak hour | 300 | 320 | 260 | 210 |
| T - % (PM) | - | - | - | - |
| Prop.of commercial vehicles - 16 hr. | - | - | - | - |
| WEST BOUND | | | | |
| A.A.D.T. | 12570 | 13160 | 12740 | 10370 |
| R 12 / 24 - % | 65.9 | 66.7 | 65.4 | 61.4 |
| R 16 / 24 - % | 83.2 | 84 | 82.2 | 79.4 |
| AM Peak Hour | 0800-0900 | 0800-0900 | 0800-0900 | 0800-0900 |
| One-way flow at AM peak hour | 760 | 840 | 750 | 420 |
| T - % (AM) | - | - | - | - |
| PM Peak Hour | 1800-1900 | 1800-1900 | 1800-1900 | 1800-1900 |
| One-way flow at PM peak hour | 770 | 810 | 750 | 660 |
| T - % (PM) | - | - | - | - |
| Prop.of commercial vehicles - 16 hr. | - | - | - | - |

3. OTHER INFORMATION AND COMMENT